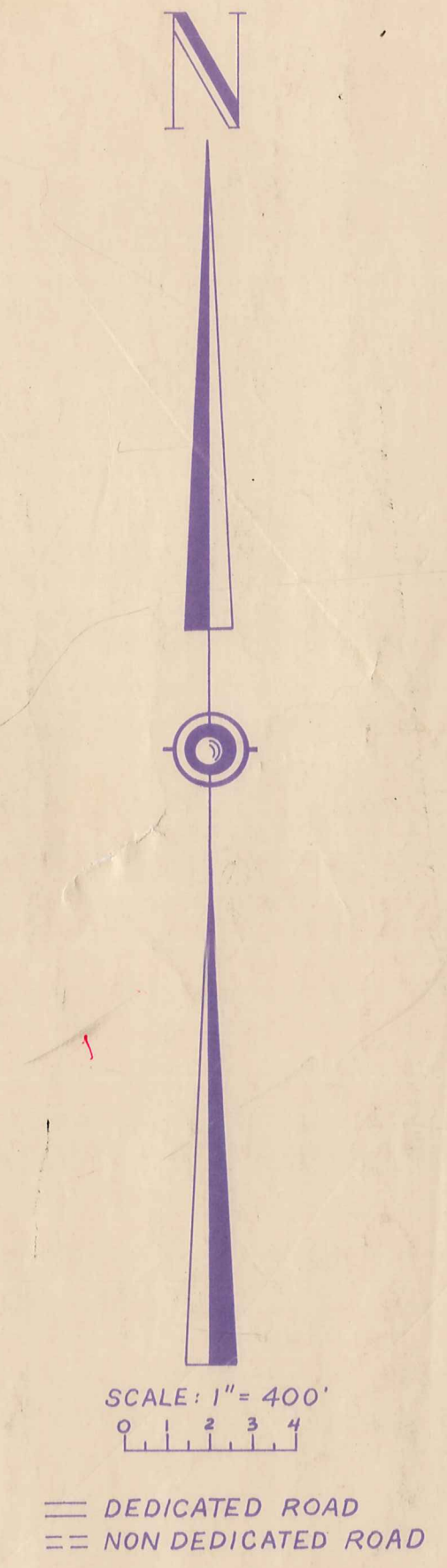
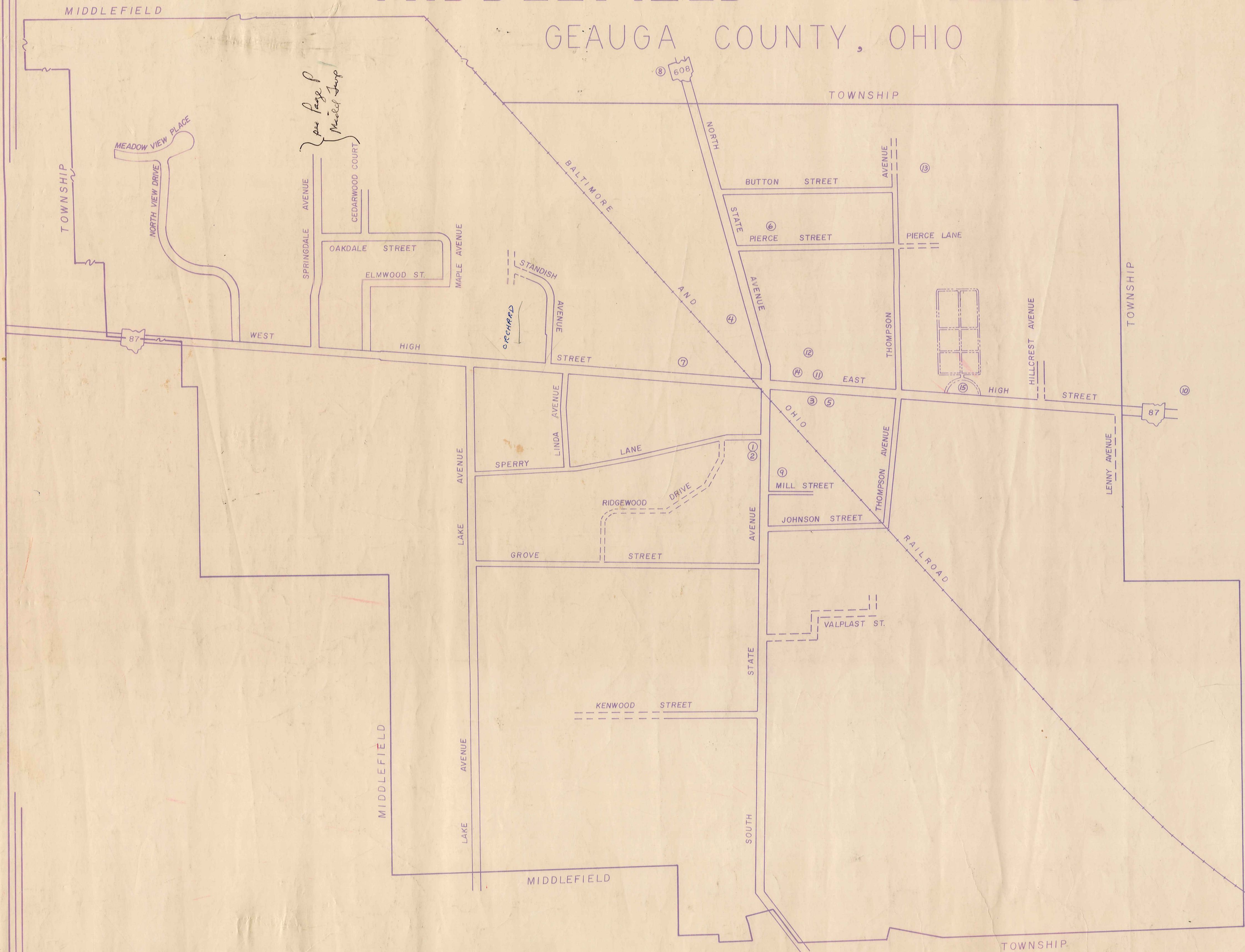


MAP OF

MIDDLEFIELD VILLAGE

GEAUGA COUNTY, OHIO



- ① MIDDLEFIELD VILL. HALL
- ② MIDDLEFIELD VILL. POLICE DEPT.
- ③ UNITED STATES POST OFFICE
- ④ MIDDLEFIELD VOL. FIRE DEPT.
- ⑤ VETERANS MEMORIAL HALL
- ⑥ BETHESDA NURSING HOME
- ⑦ WESLEYAN METHODIST CHURCH
- ⑧ MIDDLEFIELD REVIVAL CHURCH
- ⑨ FIRST UNITED METHODIST CHURCH
- ⑩ SAINT LUCY CHURCH
- ⑪ CARDINAL JUNIOR HIGH SCHOOL
- ⑫ MIDDLEFIELD ELEM. SCHOOL
- ⑬ CARDINAL HIGH SCHOOL
- ⑭ MIDDLEFIELD BRANCH LIBRARY
- ⑮ MIDDLEFIELD CEMETERY

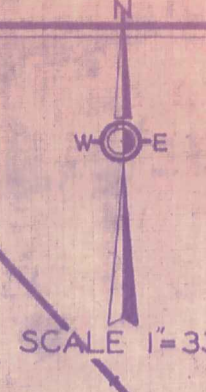
OFFICE OF GEAUGA COUNTY ENGINEER
CHARDON, OHIO

INDEX MAP OF MIDDLEFIELD VILL.

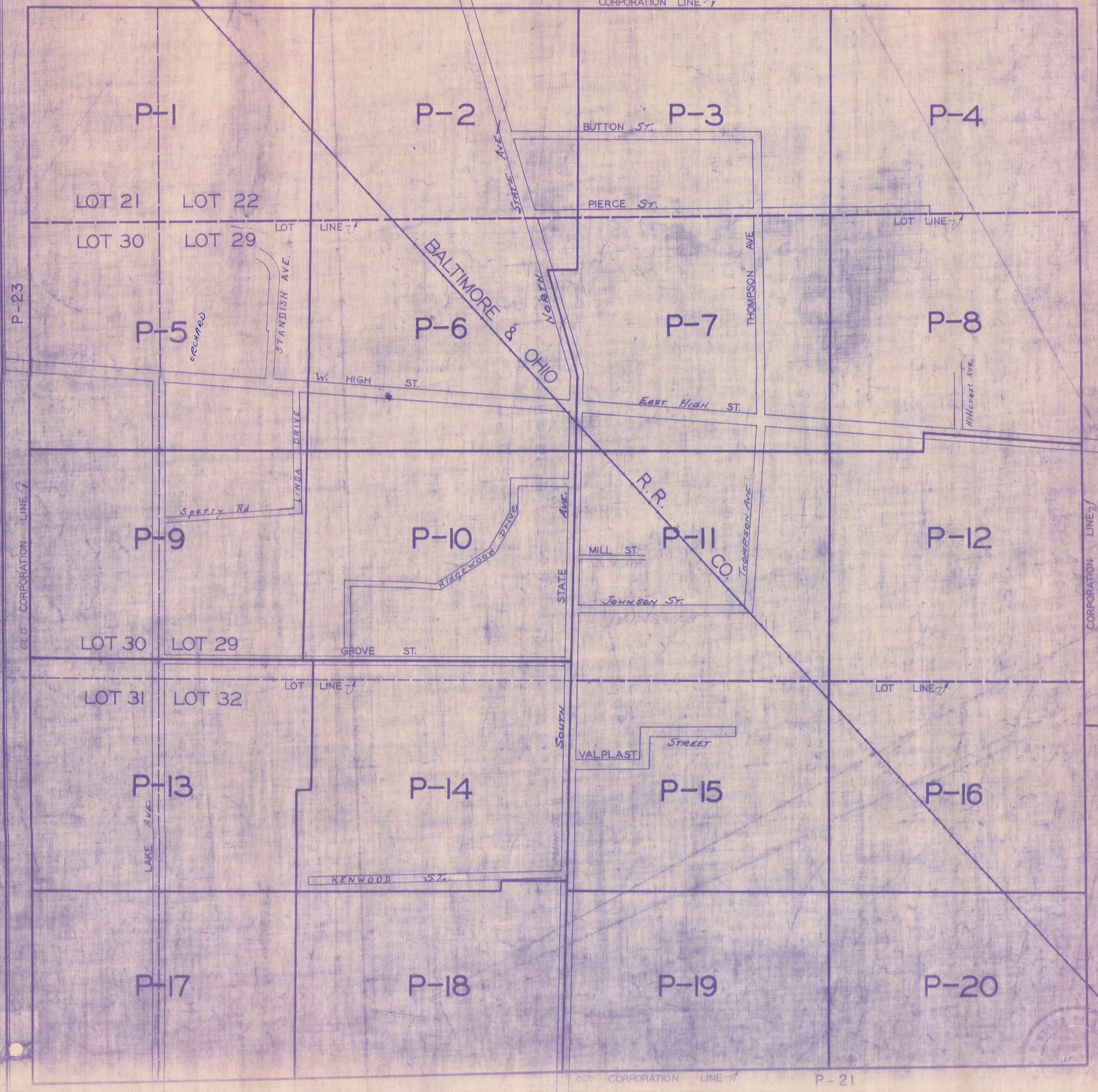
JAN. 1, 1989

P-22

P-23



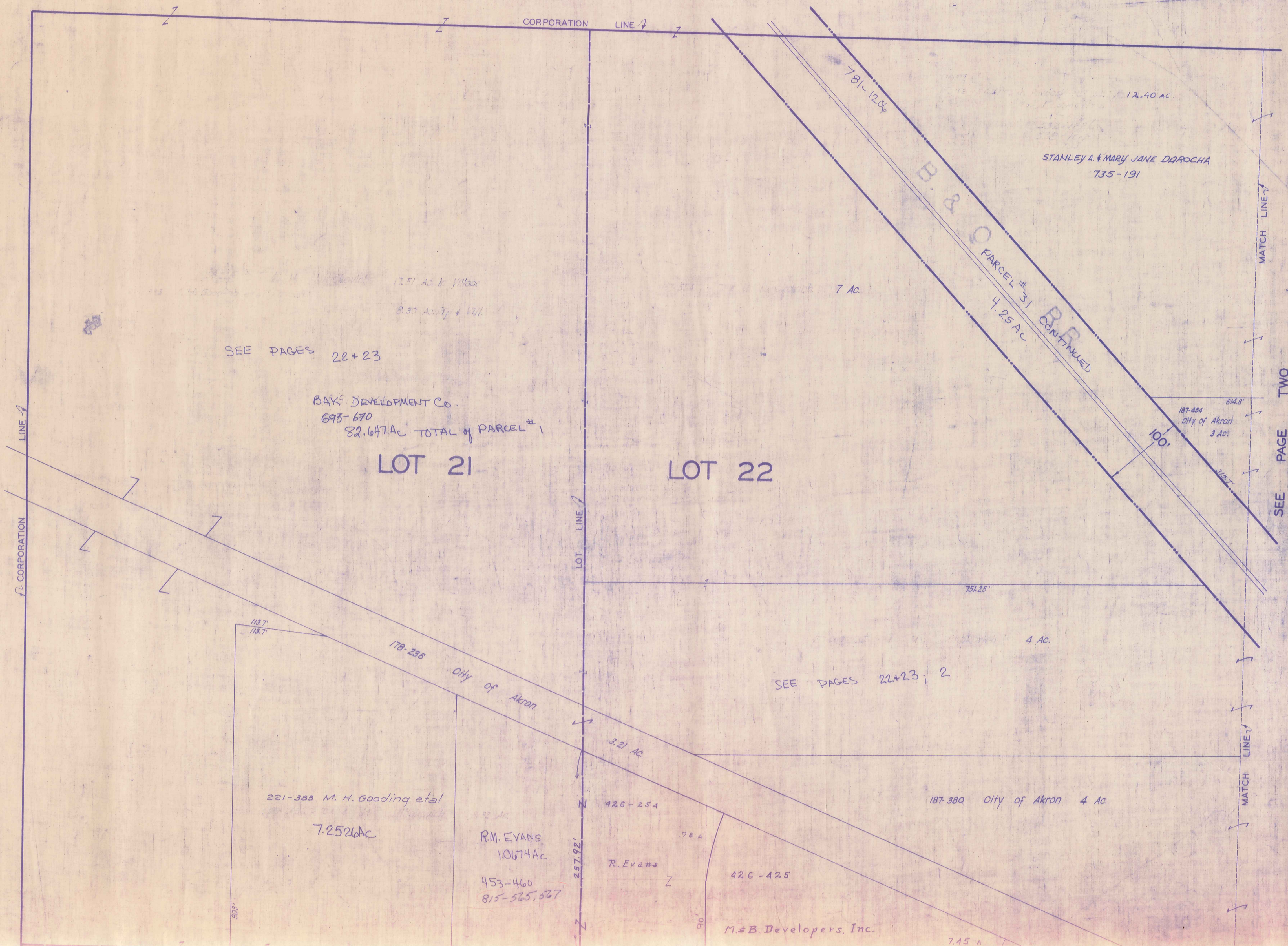
CORPORATION LINE ↗



OLD CORPORATION LINE ↗

P-21

MIDDLEFIELD VILLAGE



SEE PAGES 22+23

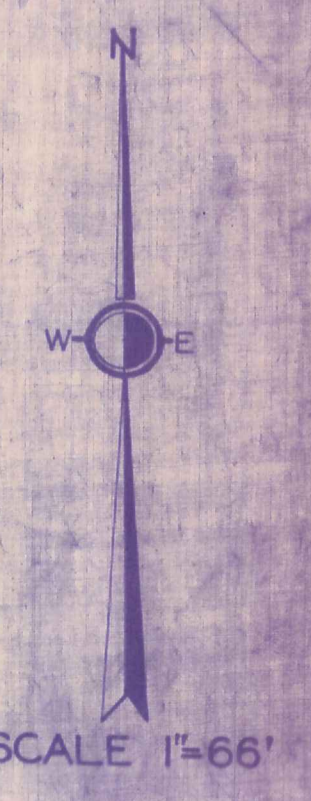
BAK DEVELOPMENT CO.
695-670
82.647 AC TOTAL of PARCEL #1

LOT 21

LOT 22

SEE PAGES 22+23; 2

SEE PAGE TWO

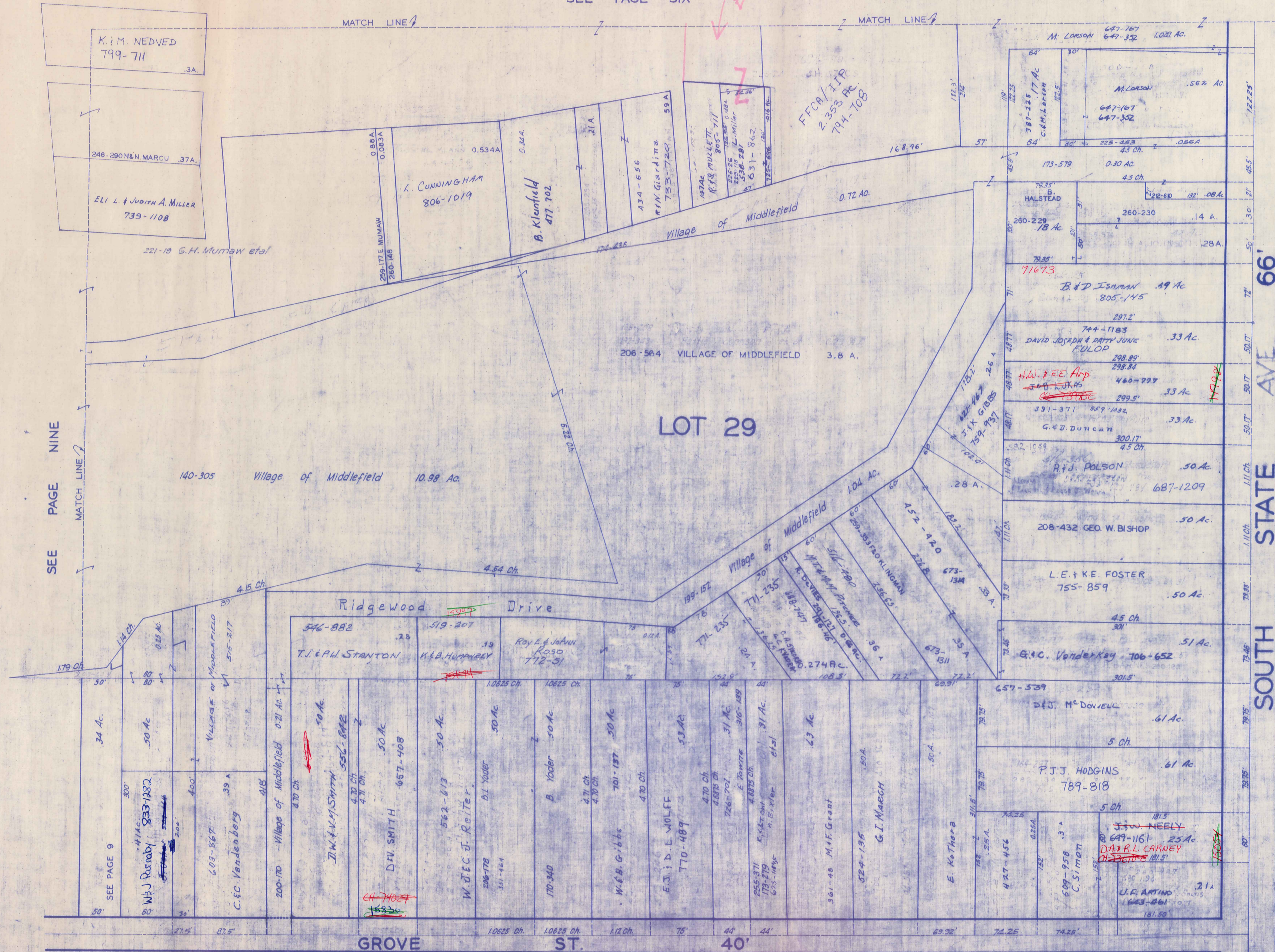


JANUARY 1, 1988

MIDDLEFIELD VILLAGE

SEE PAGE SIX

WATCH EXECUTOR'S AUTHORITY ON THIS SPLIT IN '91

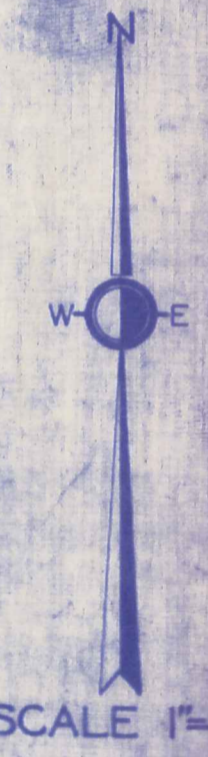


SEE PAGE NINE

SOUTH STATE AVE 66'

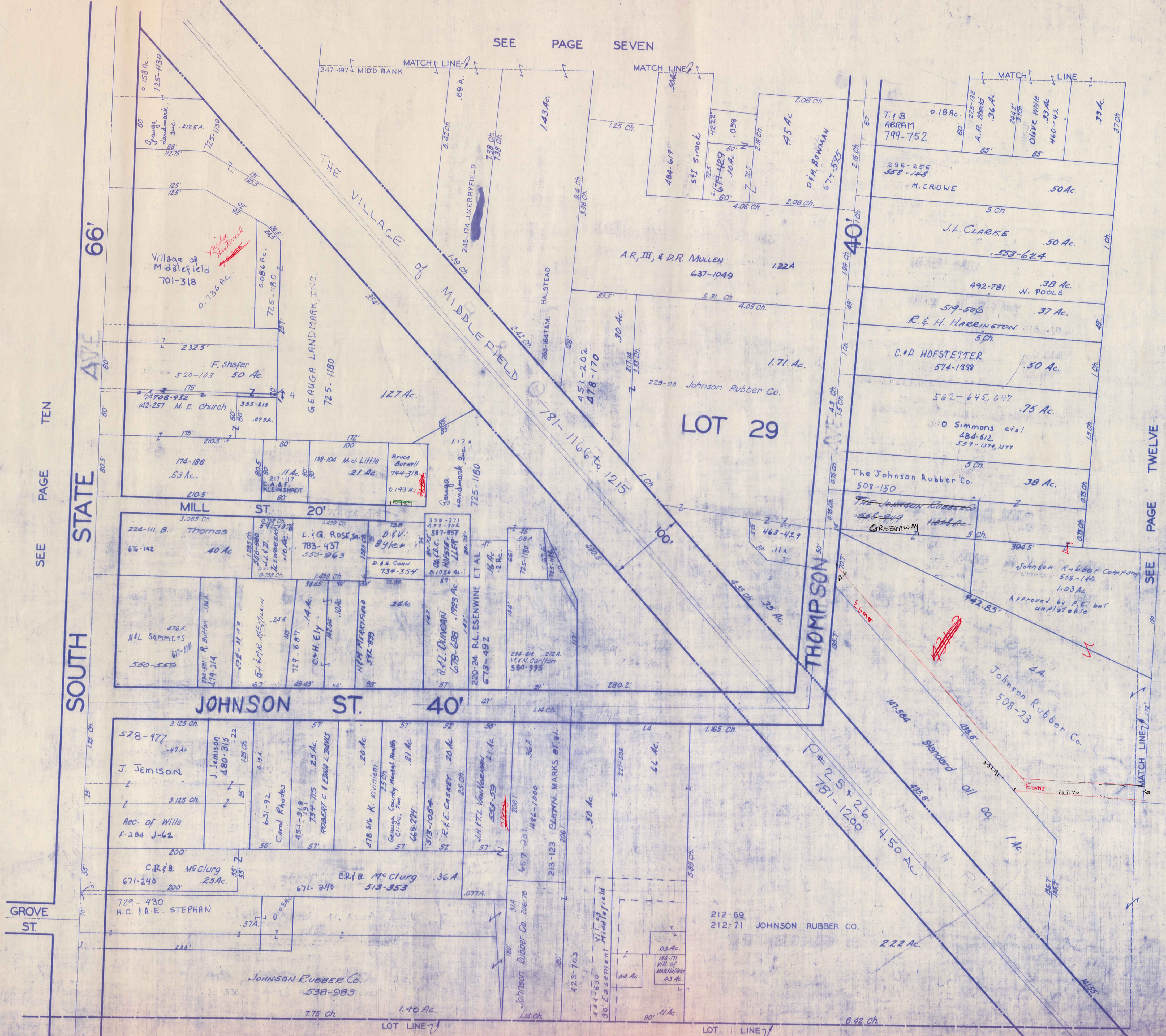
SEE PAGE ELEVEN

SEE PAGE FOURTEEN



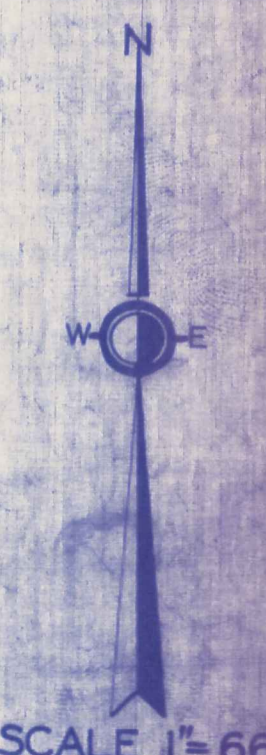
SCALE 1"=66'

JAN. 1, 1980



SEE PAGE TEN

SEE PAGE TWELVE

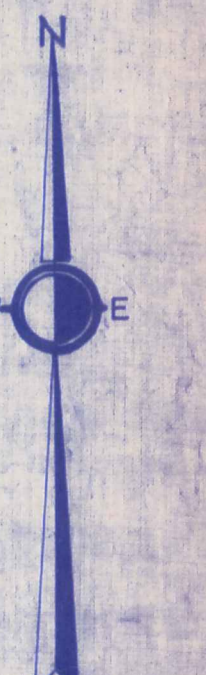
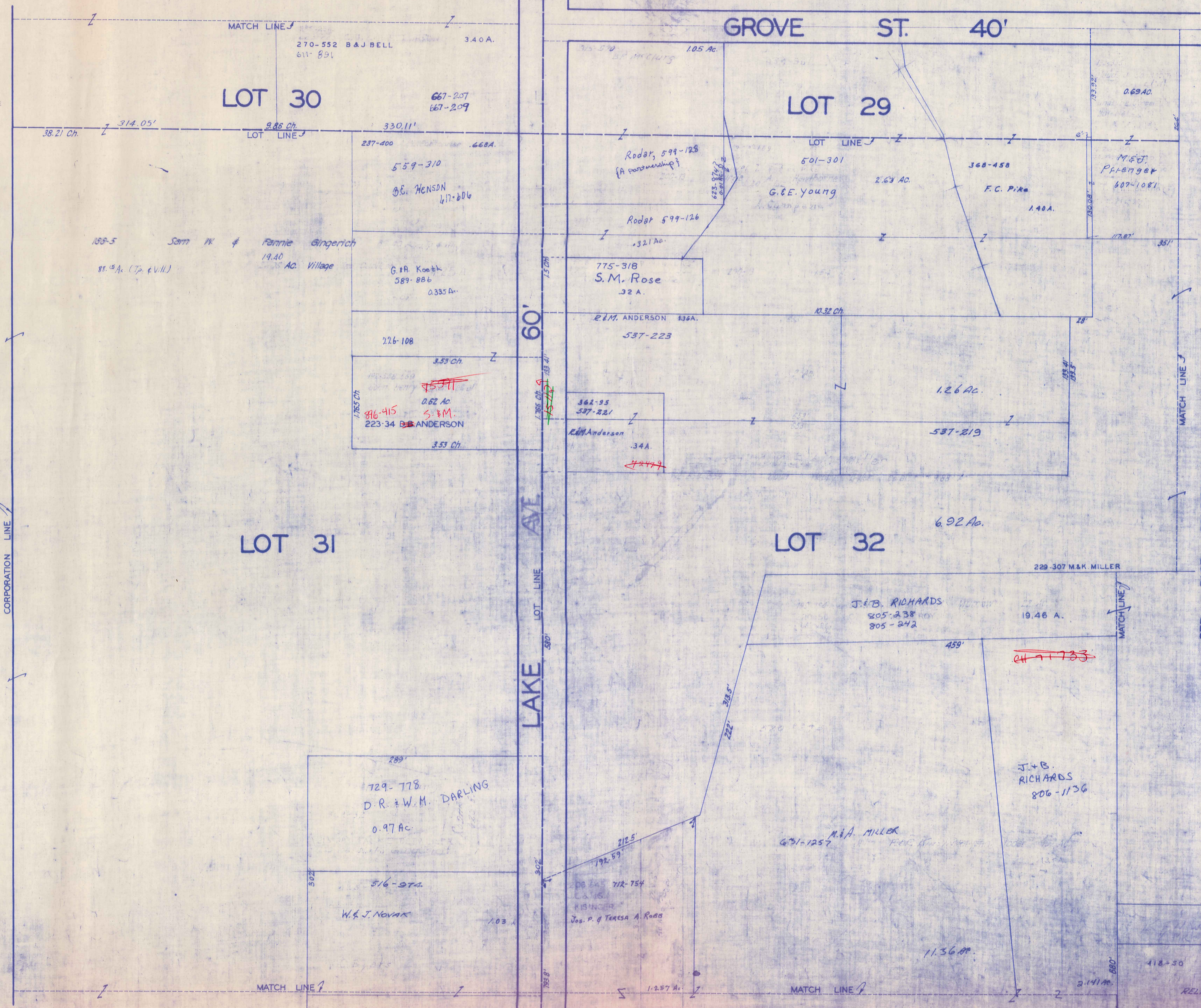


SCALE 1"=66'
 JAN. 1, 1989

RELATIVE REPRESENTATION

SEE PAGE FIFTEEN

SEE PAGE NINE



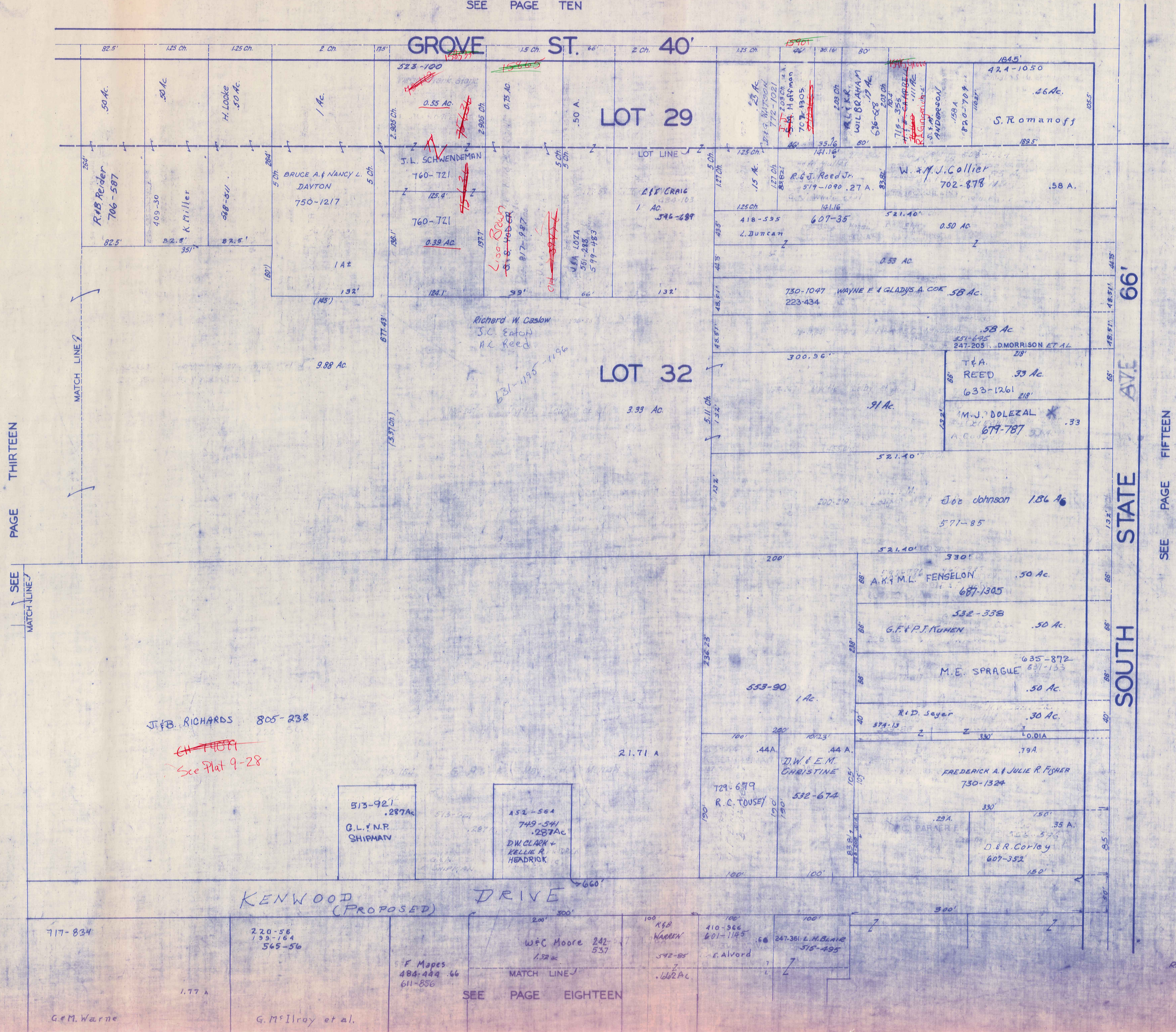
SCALE 1"=66'

JAN. 1, 1989

SEE PAGE FOURTEEN

SEE PAGE SEVENTEEN

SEE PAGE TEN



PAGE THIRTEEN

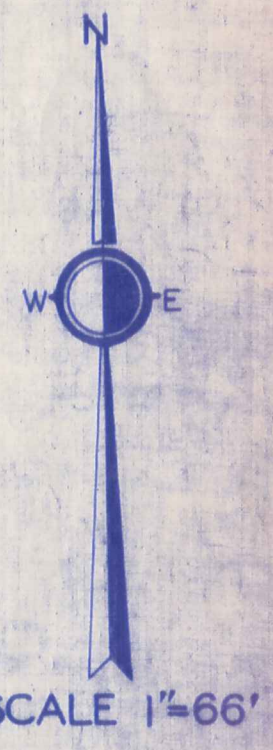
SEE MATCH LINE 7

SEE MATCH LINE 7

SEE MATCH LINE 7

SEE MATCH LINE 7

SEE PAGE FIFTEEN

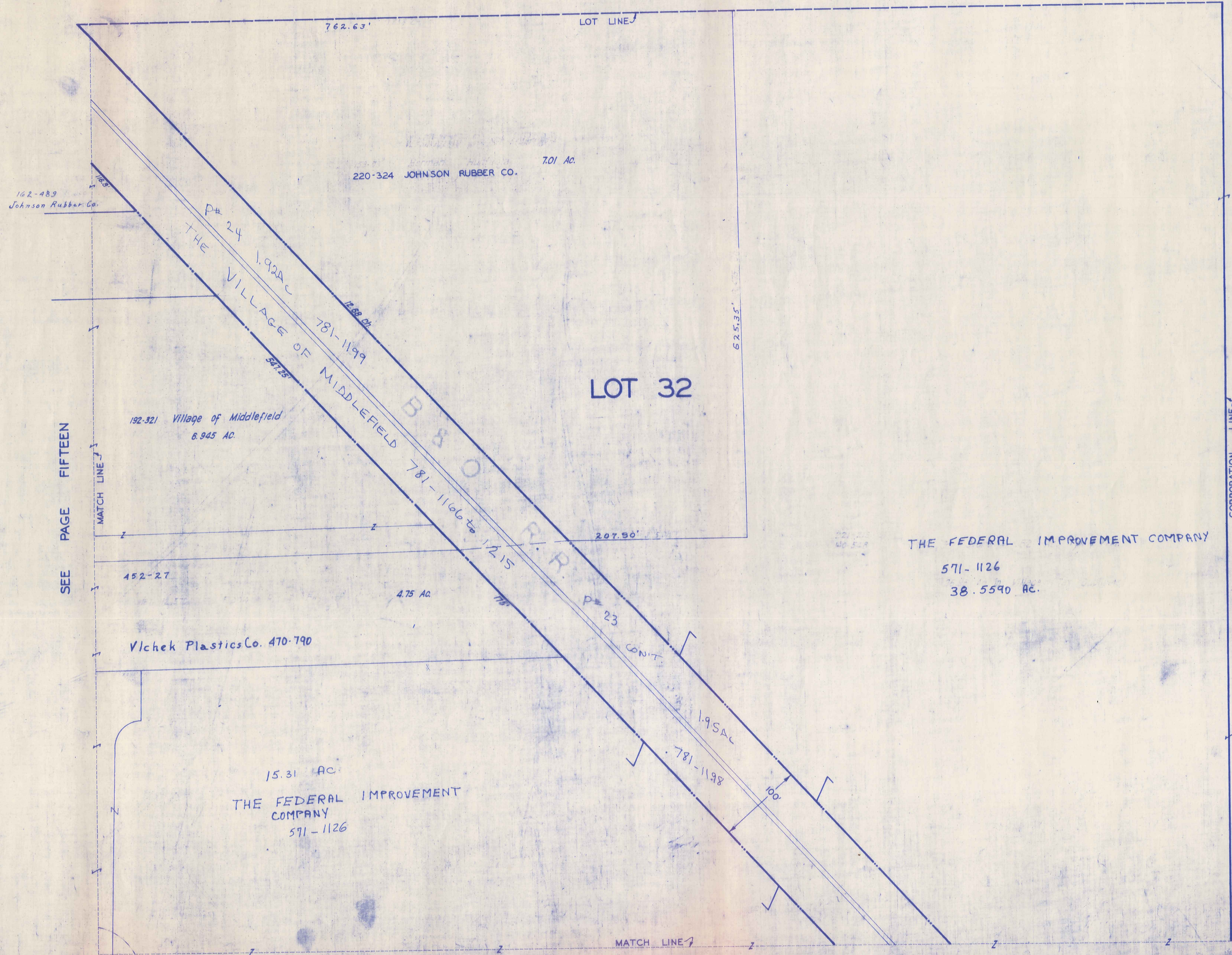


SCALE 1"=66'

JAN. 1, 1989

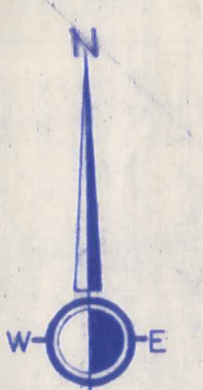
RELATIVE REPRESENTATION

SEE PAGE TWELVE



SEE PAGE FIFTEEN

SEE PAGE 21

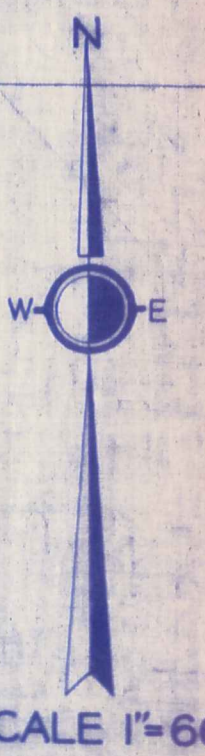
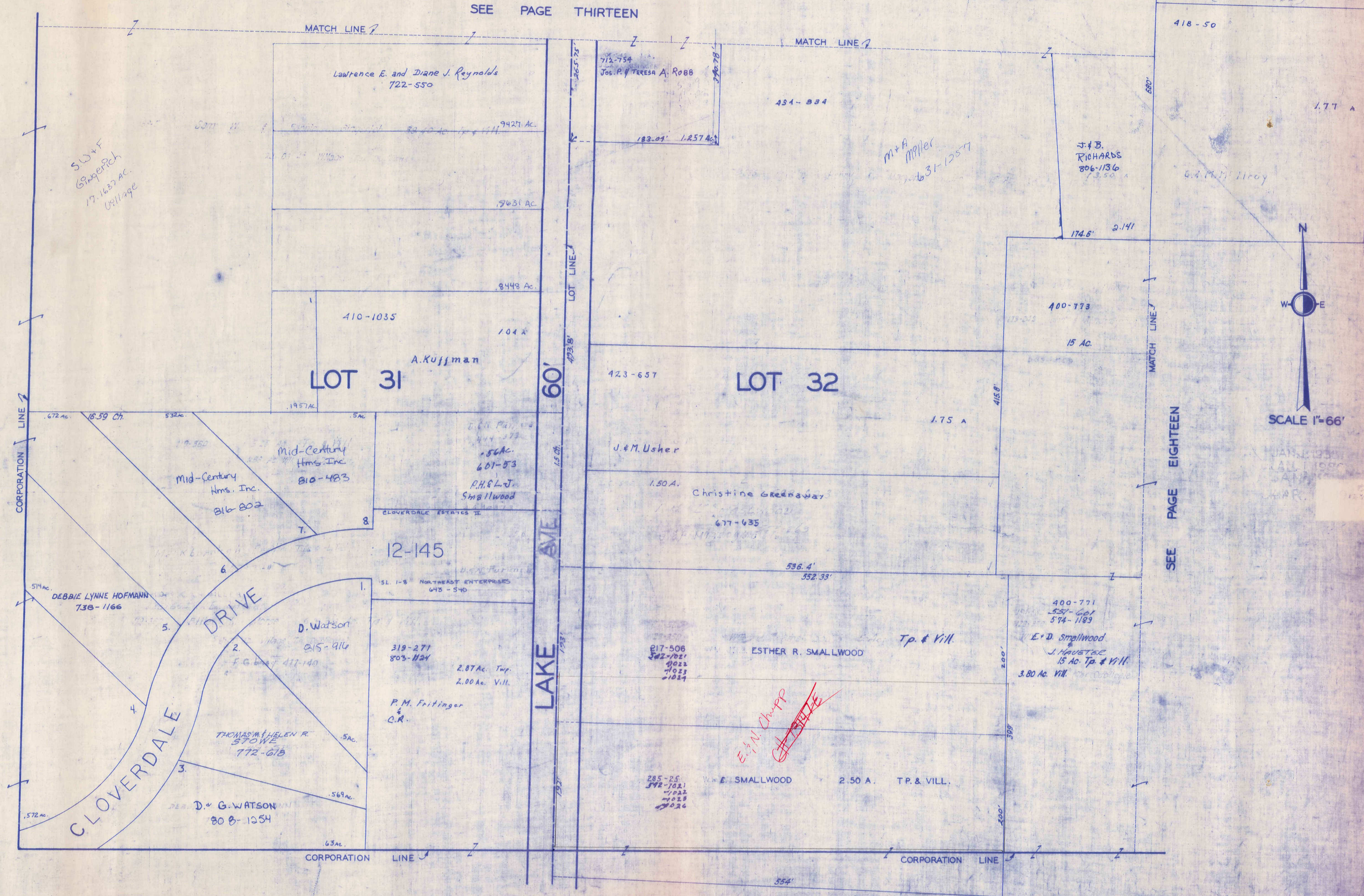


SCALE 1"=66'

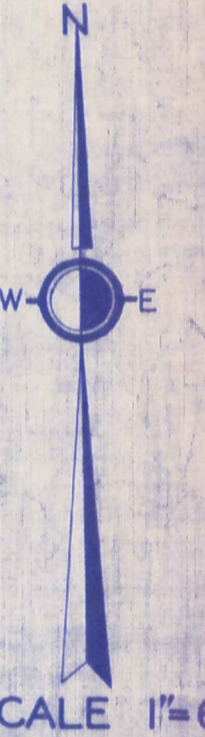
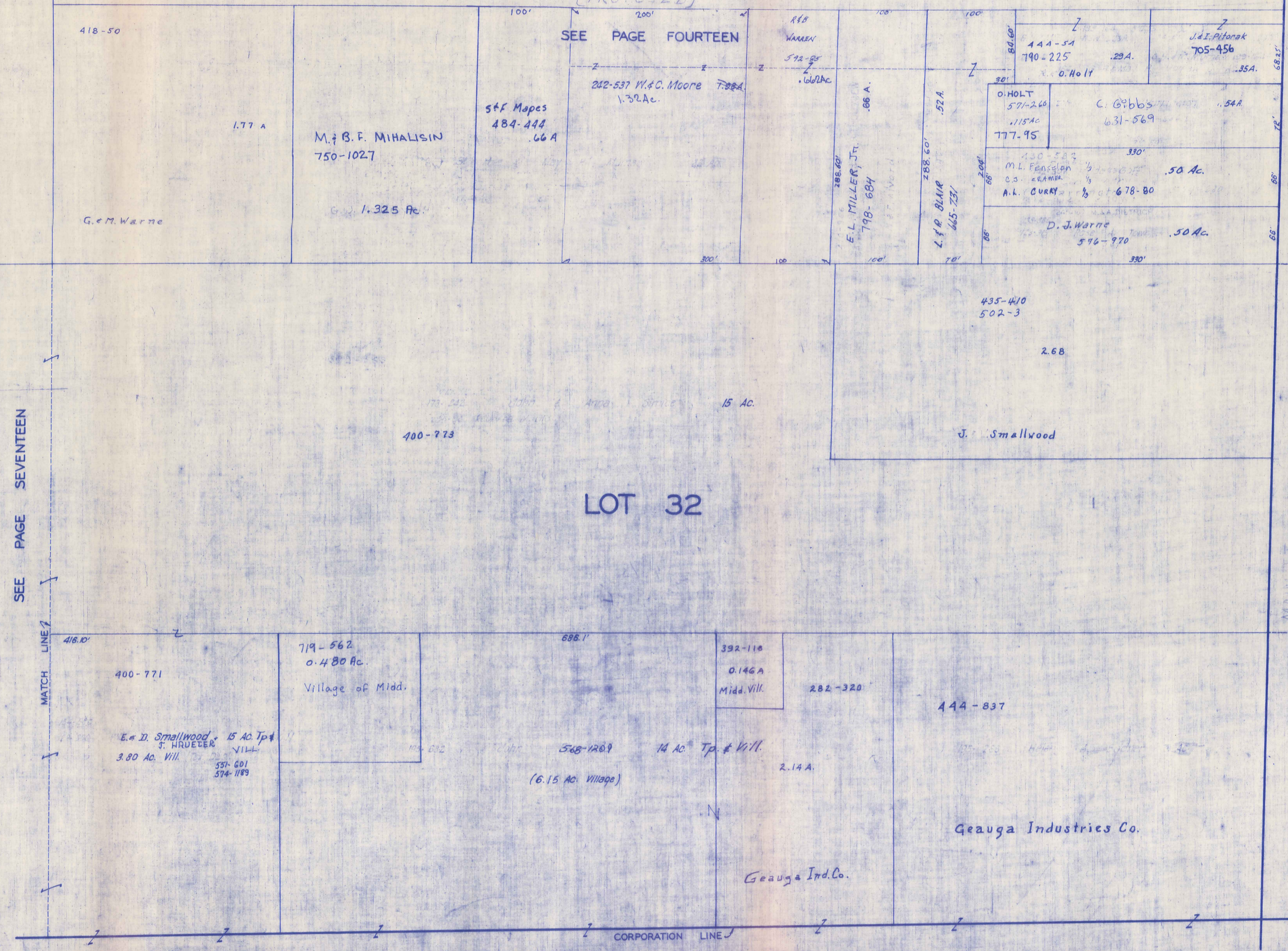
JAN. 1, 1989

SEE PAGE TWENTY

RELATIVE REPRESENTATION

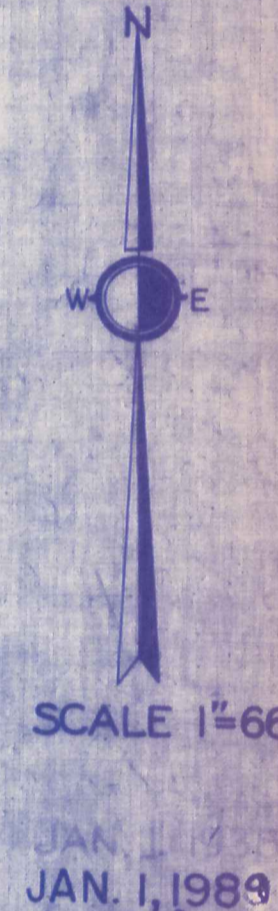
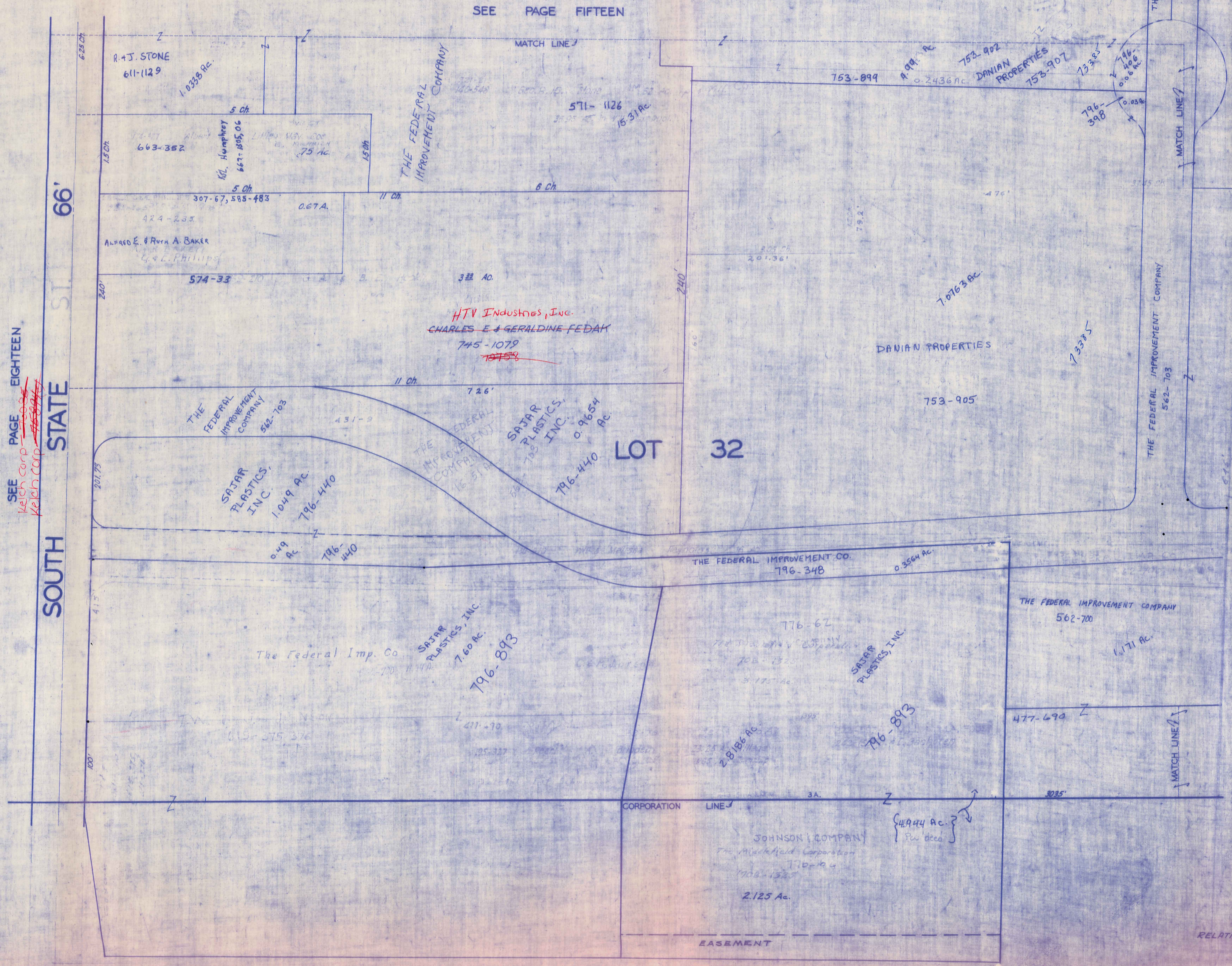


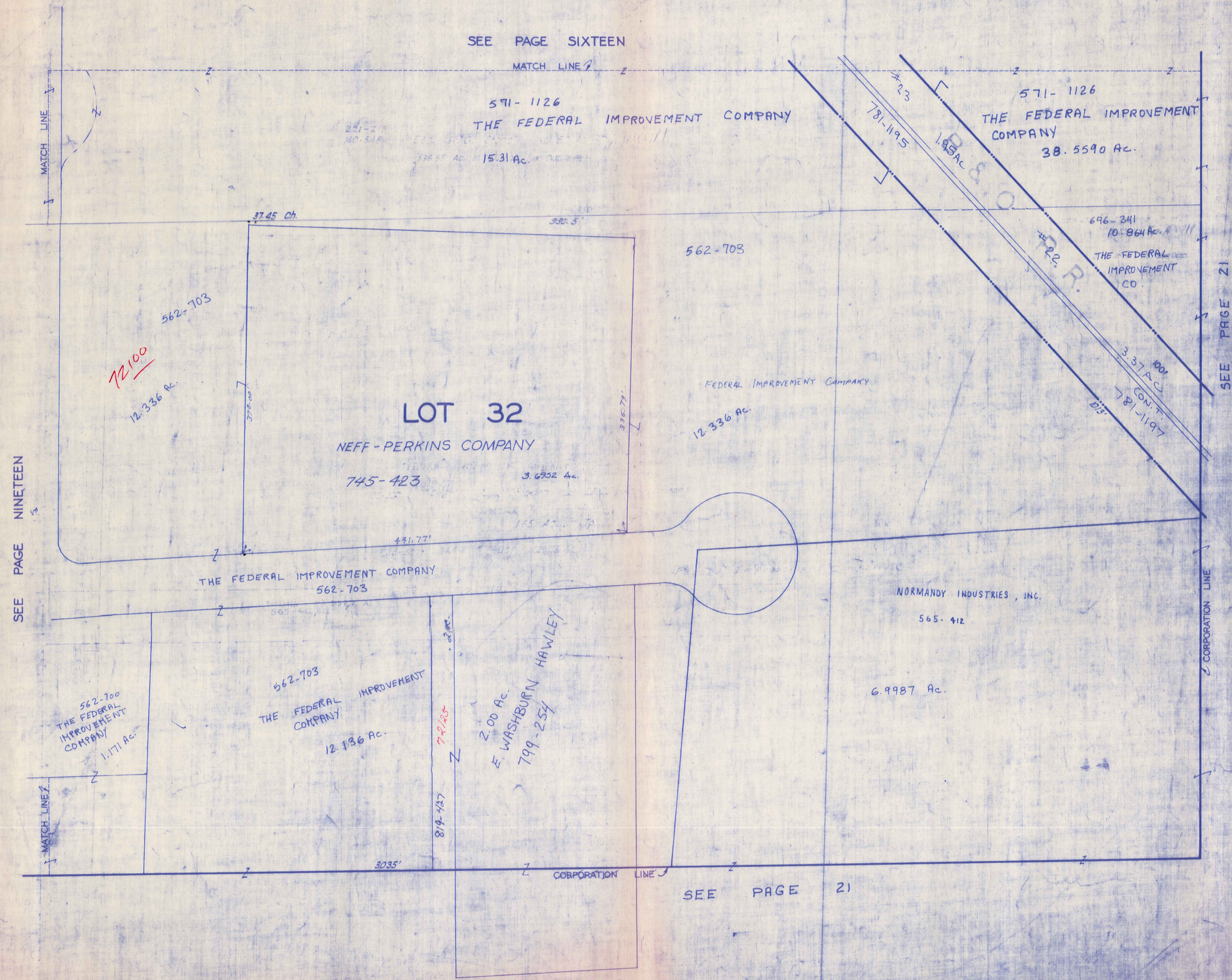
KINWOOD (PROPOSED) DRIVE 50'



SCALE 1"=66'

JAN 11 1969
L.A. 11 1969



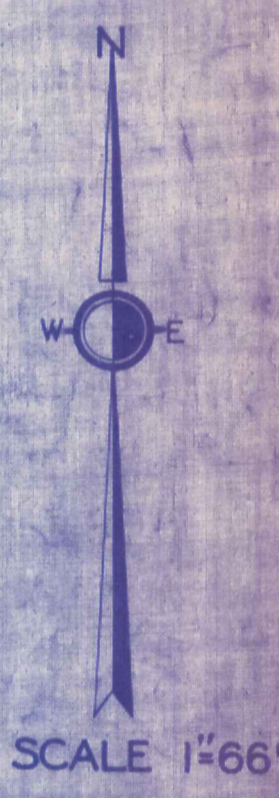


SEE PAGE NINETEEN

SEE PAGE SIXTEEN

SEE PAGE 21

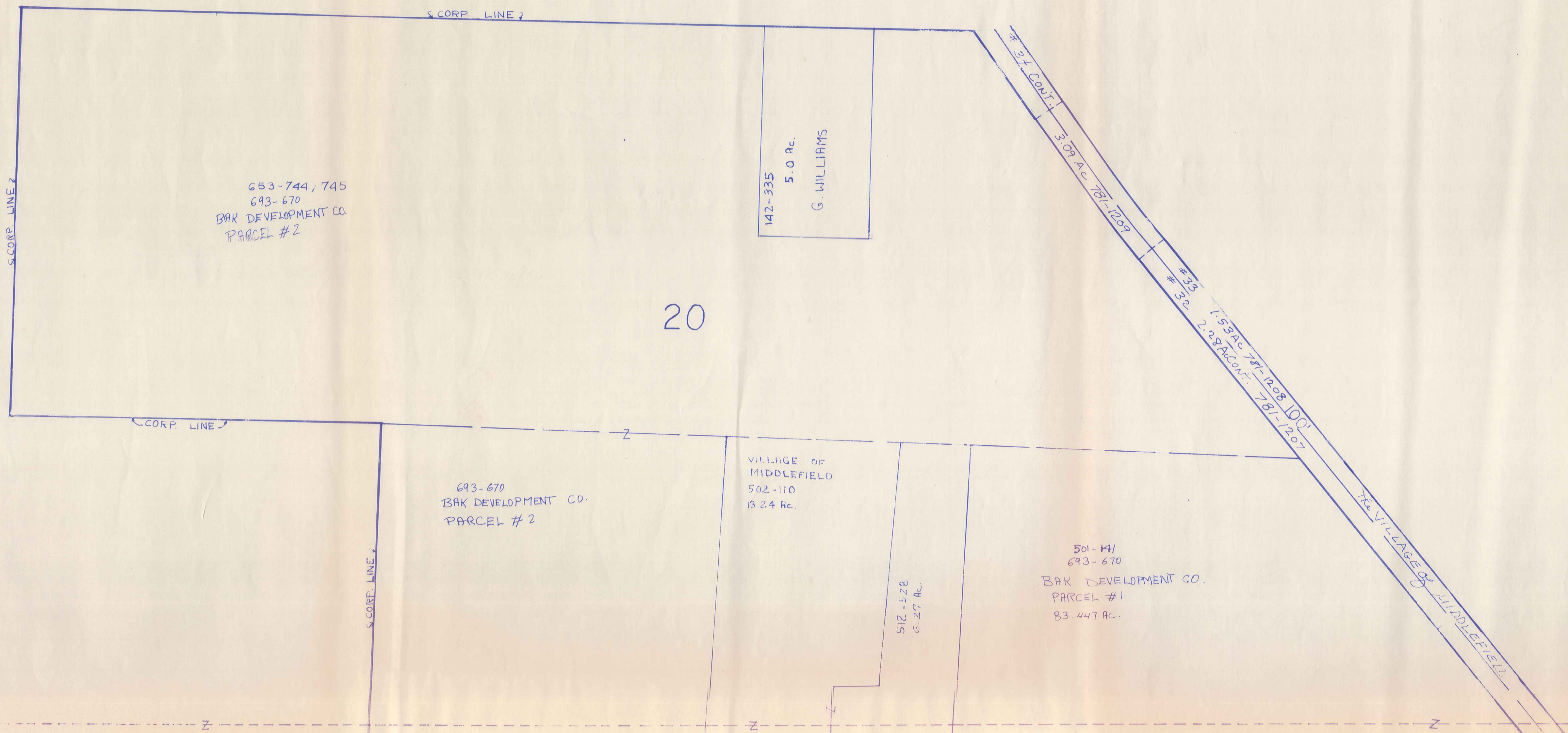
SEE PAGE 21



JAN 1, 1989

1989

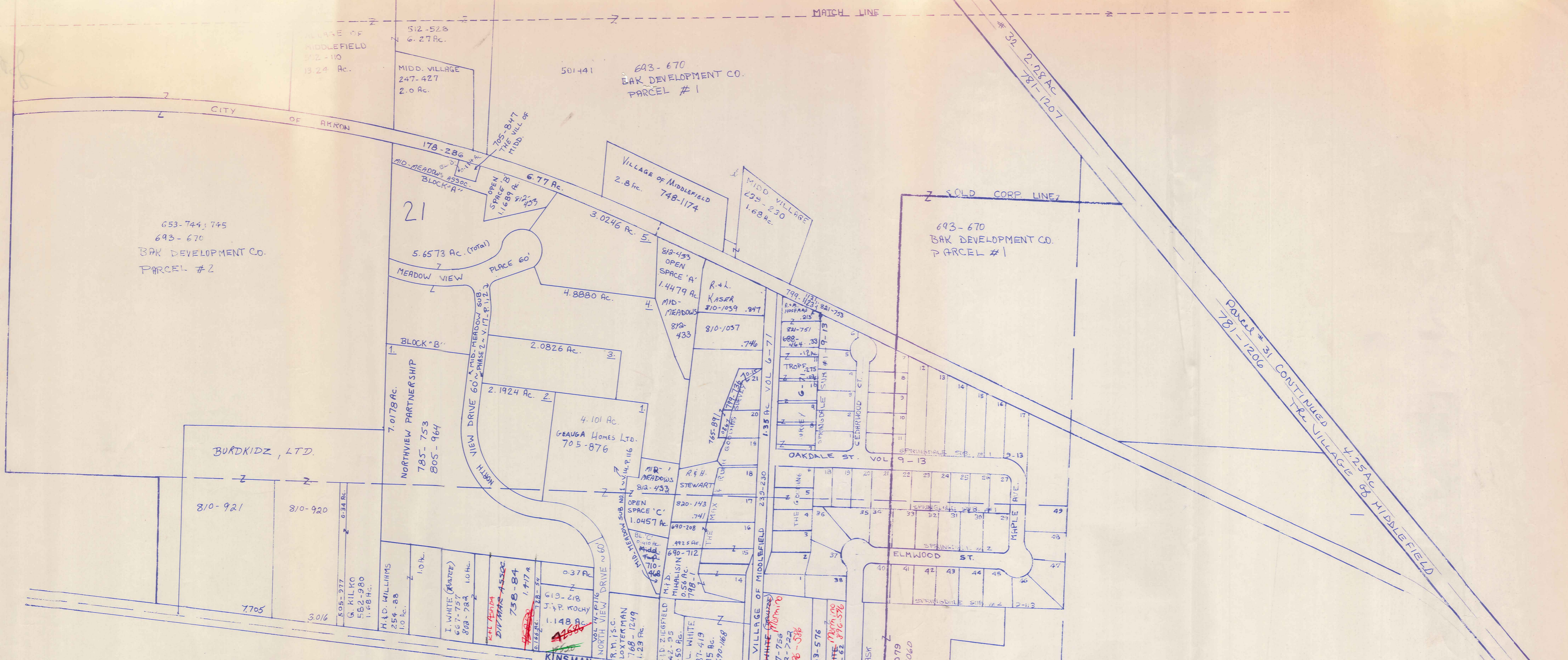
W. WALDEN



SCALE 1" = 200'

JAN. 1, 1989

RELATIVE REPRESENTATION



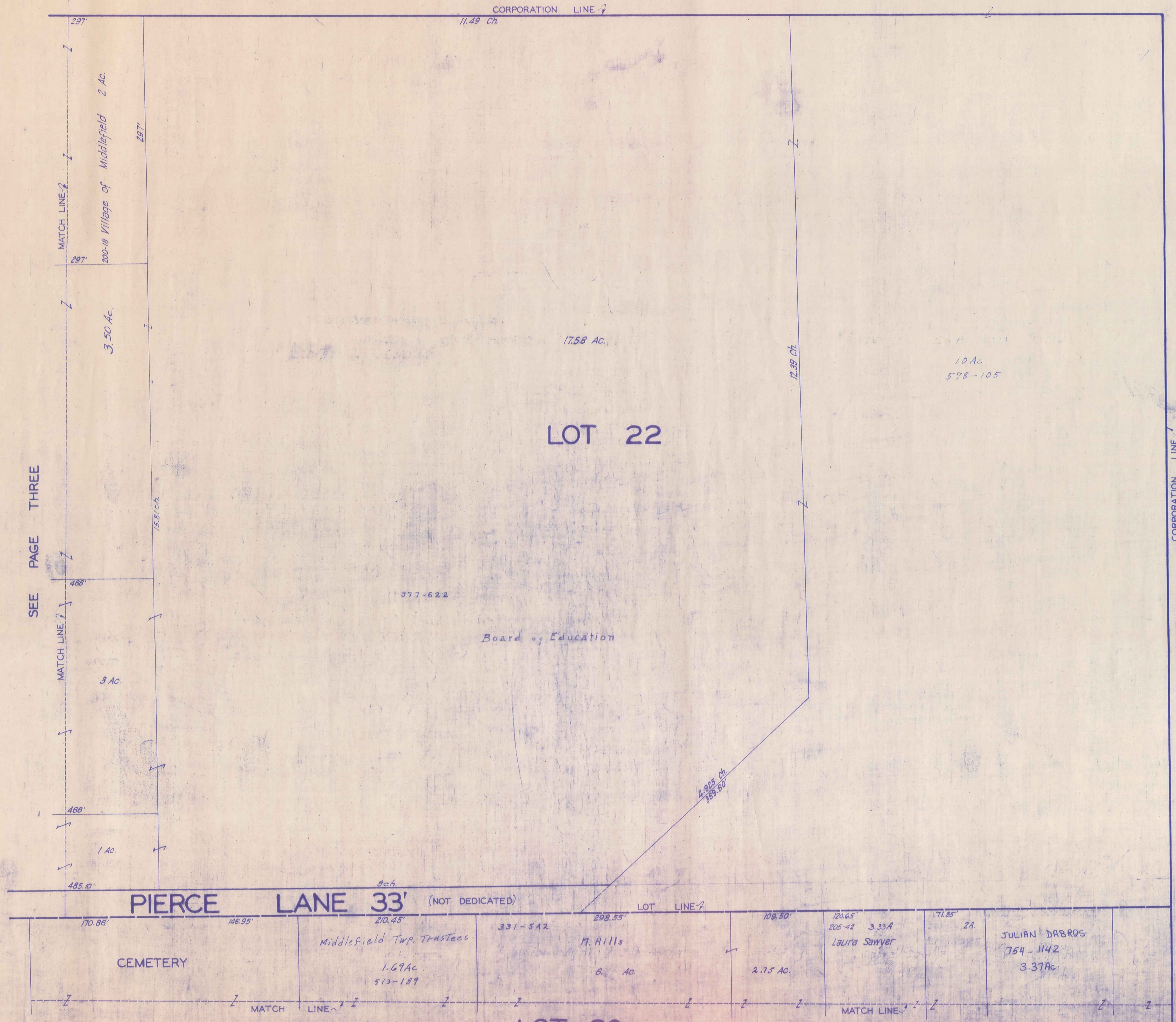
- THE MAX H & RUTH B GOODING SURVEY ~ G-71
- | | | |
|------------------------------|----------|---------------------|
| #1 N. NELSON | 562-720 | 0.26 Ac. |
| #2 R + D. Baumgartner | 201-687 | 0.275 Ac. |
| #3 F. FALES | 387-456 | 0.275 Ac. |
| #4 S. L. THOMAS | 480-812 | 0.275 Ac. |
| #5 T. & R. MOSS | 553-1276 | 0.275 Ac. |
| #6 L. McELROY AND E. EDWARDS | 710-586 | 0.275 Ac. |
| #7 R. E. CHRISTOFFERSON | 452-100 | 0.275 Ac. |
| #8 | " | " |
| #9 J. & M. BORKHOLDER | 495-418 | 0.275 Ac. |
| #10 K. J. HERRON | 785-9 | 0.276 Ac. |
| #11 G. & J. TROFF | 495-250 | 0.275 Ac. (734-289) |
- SPRINGDALE SUBDIVISION NO. 1 & NO. 2
- | | | |
|-------------------------|-----------------|-----------|
| #1 D. & M. Parton | 705-121 | 0.247 Ac. |
| #2 K. GUILLEN | 550-892 | 0.25 Ac. |
| #3 P. L. WISEMAN | 795-31, 537-644 | 0.25 Ac. |
| #4 S. M. KOZENKO | 809-225 | 0.25 Ac. |
| #5 G. W. & B. J. WILKES | 537-639 | 0.235 Ac. |
| #6 C. & N. LANGHAM | 562-906 | 0.293 Ac. |
| #7 A. & M. SATTERLEE | 815-442 | 0.247 Ac. |
| #8 G. FULOP | 780-739 | 0.282 Ac. |
| #9 H. D. BARCIKOWSKI | 537-924 | 0.250 Ac. |
| #10 G. & J. E. TROFF | 734-289 | .03 Ac. |
| #11 R. E. STEWART | 593-782 | 0.247 Ac. |
| #12 E. E. SELBY | 484-600 | 0.580 Ac. |
| #13 M. E. BRILLA et al. | 485-54 | 0.524 Ac. |
| #14 W. & B. OSMOND | 576-1033 | 0.468 Ac. |
- SECTION 30
- | | | |
|-----------------------|----------------|-------------------|
| #12 | | |
| #13 | | |
| #14 M. D. MIHALISIN | 798-1, 410-136 | 0.58 Ac. 1/2 # 16 |
| #15 L. K. JONES | 690-201 | 0.26 Ac. |
| #16 | " | 0.42 Ac. |
| #17 D. & S. CLARKE | 576-1351 | 0.39 Ac. |
| #18 R. & H. STEWART | 663-109 | 0.35 Ac. |
| #19 C. TEAL | 479-977 | 0.35 Ac. |
| #20 J. W. & B. STEELE | 785-891 | 0.26 Ac. |
| #21 J. & K. HEUN | 799-736 | 0.23 Ac. |
| #22 R. & L. KASER | 524-33 | 0.37 Ac. |
- | | | |
|--------------------------|----------|-----------|
| #15 W. & B. OSMOND | 576-1032 | 0.412 Ac. |
| #16 M. & M. MALLISKI | 791-650 | 0.356 Ac. |
| #17 R. DEMARCO | 813-1206 | 0.373 Ac. |
| #18 D. & C. HERSH | 810-243 | 0.237 Ac. |
| #19 R. J. & M. DETWEILER | 582-226 | 0.250 Ac. |
| #20 | " | 0.250 Ac. |
| #21 E. C. Ziegler | 702-551 | 0.250 Ac. |
| #22 J. D. SMITH | 617-728 | 0.250 Ac. |
| #23 L. G. & L. EIERMANN | 593-903 | 0.250 Ac. |
| #24 B. R. HATCH | 773-293 | 0.250 Ac. |
| #25 M. BARLOW | 537-1047 | 0.250 Ac. |
| #26 M. & M. PFERENGEE | 537-1097 | 0.237 Ac. |
| #27 J. L. & F. V. MILLER | 537-672 | 0.249 Ac. |
- | | | |
|-------------------------|----------|-----------|
| #29 G. L. BURRIS | 657-893 | 0.332 Ac. |
| #30 Nancy L. SHUMINSKI | 723-64 | 0.283 Ac. |
| #31 R. & J. WEINICK | 813-1031 | 0.283 Ac. |
| #32 T. L. & V. McEHEENY | 551-201 | 0.283 Ac. |
| #33 W. & K. BLUE | 591-1090 | 0.283 Ac. |
| #34 R. & D. KLEPPER | 593-722 | 0.282 Ac. |
| #35 K. & E. FERRY | 551-256 | 0.335 Ac. |
| #36 B. MAZZONE | 551-181 | 0.362 Ac. |
| #37 D. M. MARES | 775-1109 | 0.333 Ac. |
| #38 R. & S. PETRICK | 661-337 | 0.333 Ac. |
- | | | |
|--------------------------------|----------|-----------|
| #39 | | |
| #40 W. F. & D. M. CANTERBURY | 552-913 | 0.333 Ac. |
| #41 J. BRUCE | 663-711 | 0.281 Ac. |
| #42 R. & P. KISHAL | 559-490 | 0.289 Ac. |
| #43 C. J. BRIGHAM | 551-574 | 0.279 Ac. |
| #44 Arleg. Wesleyan Meth. Com. | 647-541 | 0.237 Ac. |
| #45 D. T. SCRIGGS | 551-572 | 0.232 Ac. |
| #46 J. W. & K. M. BLASUIS | 551-540 | 0.350 Ac. |
| #47 R. A. & A. BRAUN | 556-1077 | 0.357 Ac. |
| #48 D. A. HUPP | 800-17 | 0.335 Ac. |
| #49 W. J. SLY | 766-771 | 0.332 Ac. |



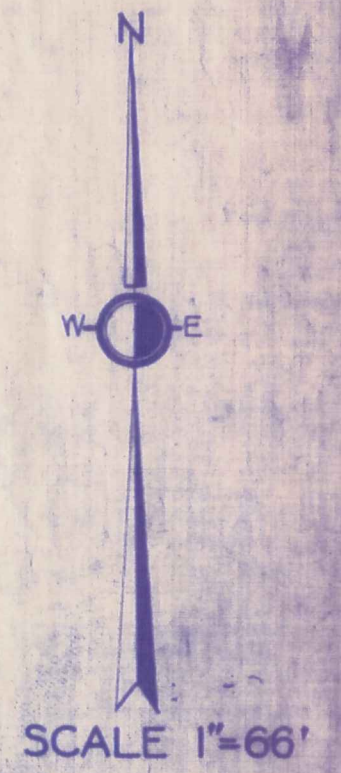
SCALE 1" = 200'

JAN. 1, 1989

RELATIVE REPRESENTATION



SEE PAGE THREE

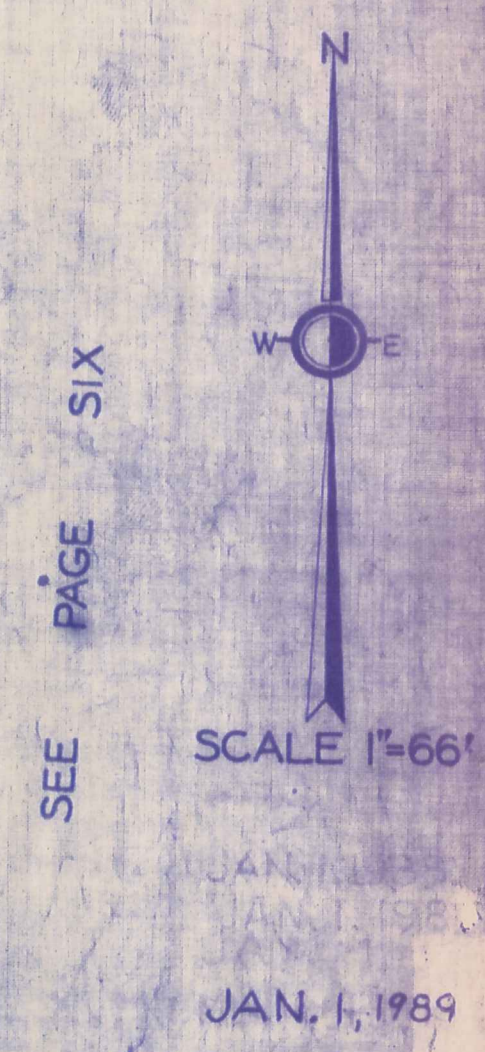


LOT 29

JANUARY 1, 1989
RELATIVE REPRESENTATION

MIDDLEFIELD VILLAGE

SEE PAGE ONE



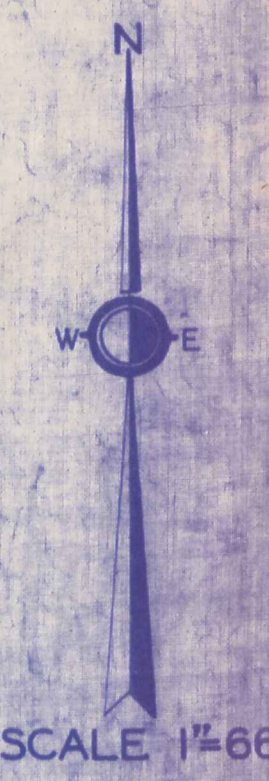
SEE PAGE SIX

JAN. 1, 1989

SEE PAGE NINE

RELATIVE REPRESENTATION

MIDDLEFIELD VILLAGE



SEE PAGE EIGHT

SEE PAGE SIX

SEE PAGE THREE

SEE PAGE ELEVEN

